



# TIIG

INJURY SURVEILLANCE IN THE NORTH WEST OF ENGLAND

## Injury attendances to Royal Oldham Hospital Emergency Department

### October 2012 and September 2013

This report summarises recorded injury attendances to Royal Oldham Hospital Emergency Department (ED) between October 2012 and September 2013.

Between October 2012 and September 2013 there were 33,600 injury attendances to Royal Oldham Hospital ED. Males accounted for over half (54%) of all attendances. The month with the highest attendances was July (n=3,214) with February (n=2,434) having the lowest attendances for injury (**Figure 1**). The majority (59%) of attendances were recorded as other injury. Of the specified injury groups, falls (24%) accounted for the highest proportion followed by road traffic collisions (RTC) (8%) and assault (5%) (**Table 1**).

For all injuries, the highest proportions of attendances were for persons aged 5 to 19 (25%) and 20 to 34 years (23%) (**Figure 2**). Almost four in ten (39%) of fall attendees were aged 65 or over (**Figure 3**).

**Table 2** shows the location of the incident of injury attendances. Almost half (49%) of injuries occurred in the home. Eight in ten (80%) of deliberate self-harm (DSH) injuries, and over half (56%) of falls, occurred in the home.

**Table 3** shows the ethnicity of injury attendees to Royal Oldham Hospital ED. Three-quarters (75%)

were white, 9% were Pakistani and 5% were Bangladeshi.

The disposal of a patient can give an indication of the severity of the injuries sustained. Over six in ten (61%) attendees were discharged, a quarter (25%) had a referral/follow-up and 12% were admitted (**Table 4**). Over four in five (81%) RTC attendees were discharged. Over half (51%) burns and scalds attendees had a referral/follow-up (**Table 5**).

**Table 6** shows the arrival methods of injury attendances at Royal Oldham Hospital ED. Almost two-thirds (65%) arrived by private transport whilst over a fifth (21%) arrived by ambulance.

**Table 7** presents data for assault attendances to Royal Oldham ED. Almost three quarters (74%) were male and almost half (46%) of attendees were aged 20 to 34 years.

Figure 1: Royal Oldham Hospital ED: Total injury attendances by gender and month, October 2012 to September 2013

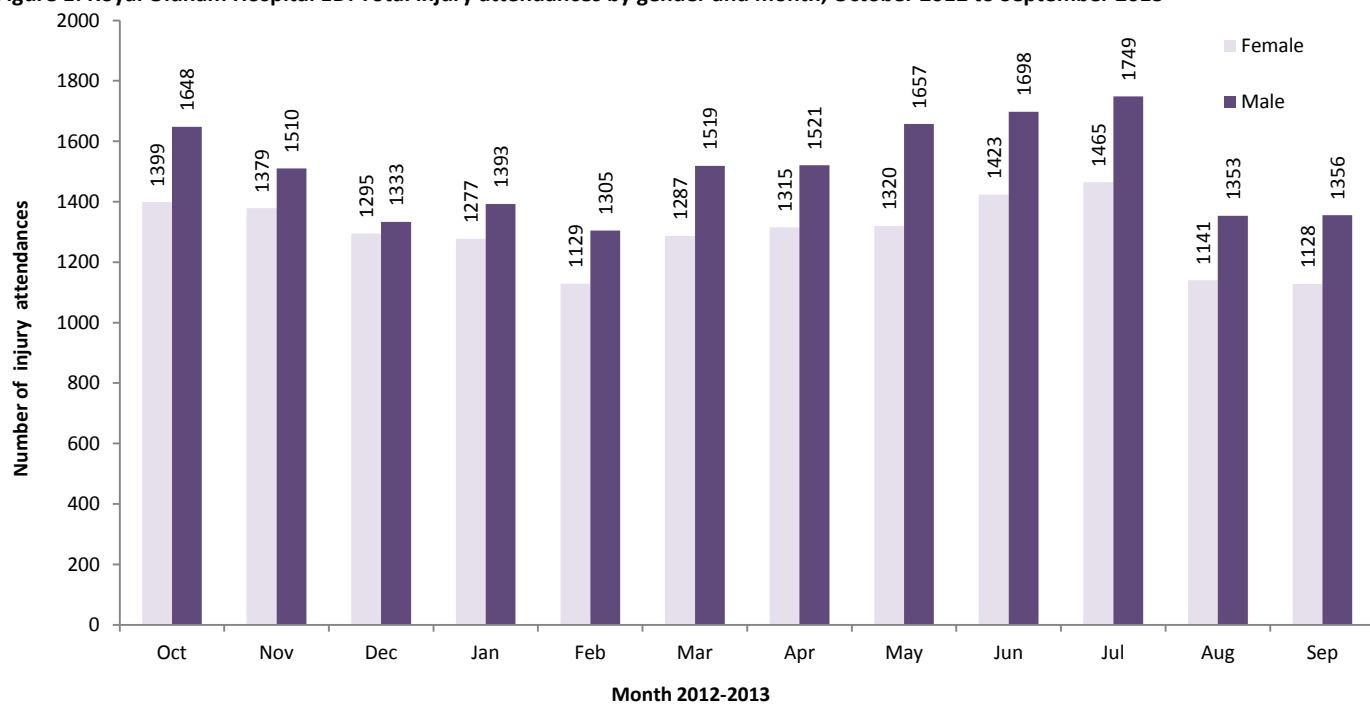
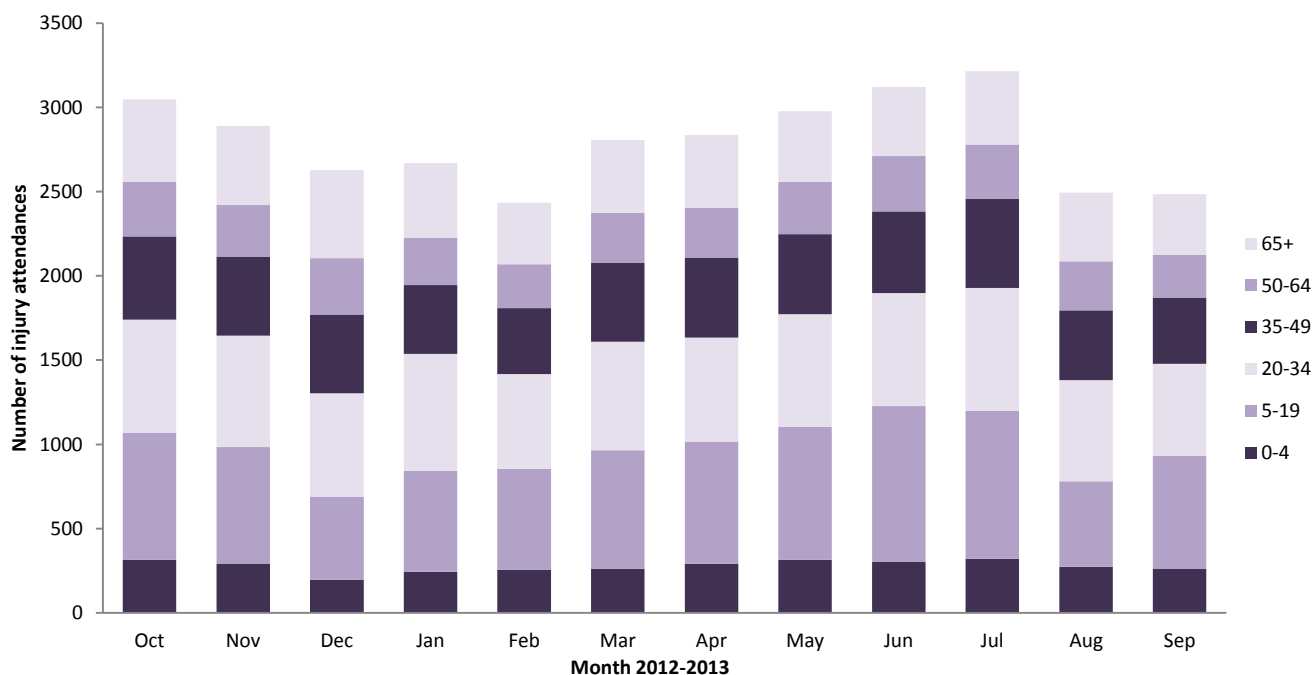


Table 1: Royal Oldham Hospital ED: Total injury attendances by injury group and month, October 2012 to September 2013

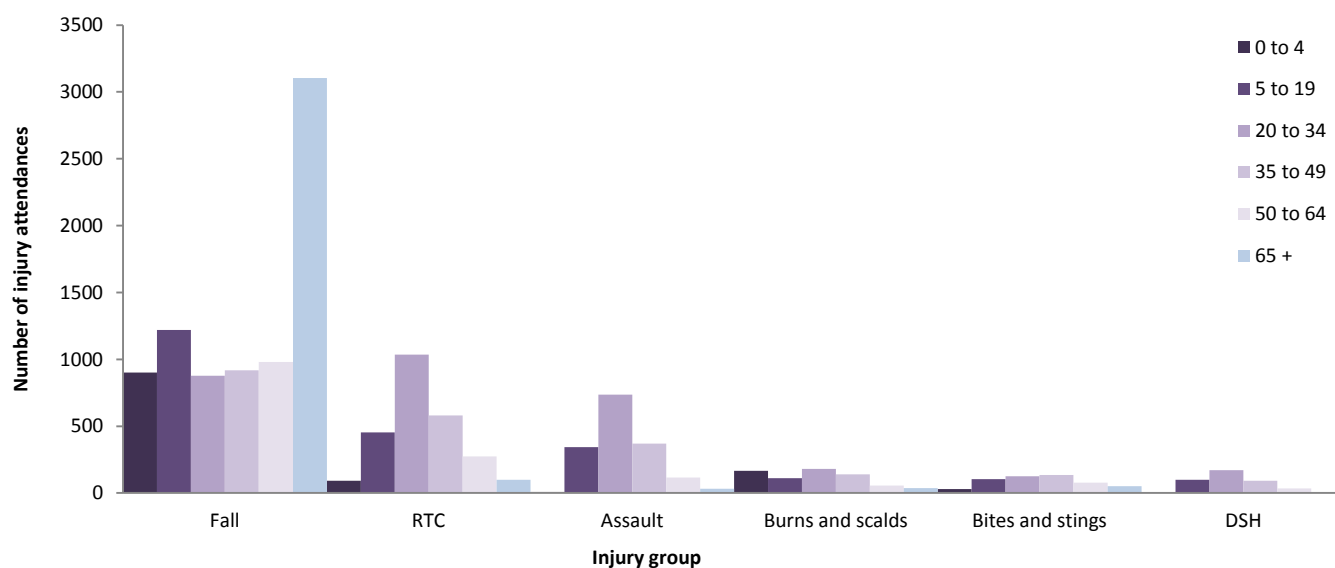
Injury group	Oct	Nov	Dec	Jan	Feb	Mar	Apr	May	Jun	Jul	Aug	Sep	Total	%
Other injury	1849	1781	1403	1529	1422	1674	1727	1842	1877	1965	1334	1433	19836	59
Fall	692	577	735	698	565	675	662	662	751	729	671	586	8003	24
RTC	225	259	204	206	209	225	194	197	223	189	182	222	2535	8
Assault	146	127	174	113	128	131	111	133	143	128	154	119	1607	5
Burns and scalds	70	68	48	70	46	32	61	48	55	78	66	52	694	2
Bites and stings	37	32	32	30	27	37	42	64	37	87	62	37	524	2
DSH	28	45	32	24	37	32	39	31	35	38	25	35	401	1
<b>Total</b>	<b>3047</b>	<b>2889</b>	<b>2628</b>	<b>2670</b>	<b>2434</b>	<b>2806</b>	<b>2836</b>	<b>2977</b>	<b>3121</b>	<b>3214</b>	<b>2494</b>	<b>2484</b>	<b>33600</b>	<b>100</b>

Figure 2: Royal Oldham Hospital ED: Total injury attendances by age group and month, October 2012 to September 2013<sup>1</sup>



<sup>1</sup> There was one attendance where age was unknown

**Figure 3: Royal Oldham Hospital ED: Total injury attendances by age group and injury group (excluding other injury), October 2012 to September 2013**



**Table 2: Royal Oldham Hospital ED: Total injury attendances by incident location and injury group, October 2012 to September 2013<sup>2</sup>**

Incident location	Assault		Bites and stings		Burns and scalds		DSH		Fall		RTC		Other		Total	
	n	%	n	%	n	%	n	%	n	%	n	%	n	%	n	%
Home	471	29	247	47	408	59	320	80	4471	56	208	8	10469	53	16594	49
Other	309	19	74	14	38	5	37	9	513	6	2035	80	3315	17	6321	19
Public place	675	42	129	25	21	3	24	6	1640	20	230	9	2452	12	5171	15
Not recorded	52	3	35	7	140	20	16	4	928	12	54	2	597	3	1822	5
Work	50	3	<40	7	80	12	***	0	195	2	<10	0	1461	7	1829	5
Educational establishment	50	3	***	1	7	1	***	1	256	3	***	0	1542	8	1863	6
<b>Total</b>	<b>1607</b>	<b>100</b>	<b>524</b>	<b>100</b>	<b>694</b>	<b>100</b>	<b>401</b>	<b>100</b>	<b>8003</b>	<b>100</b>	<b>2535</b>	<b>100</b>	<b>19836</b>	<b>100</b>	<b>33600</b>	<b>100</b>

**Table 3: Royal Oldham Hospital ED: Total injury attendances by ethnicity and month, October 2012 to September 2013<sup>2,3</sup>**

Ethnicity	Oct	Nov	Dec	Jan	Feb	Mar	Apr	May	Jun	Jul	Aug	Sep	Total	%
White	2359	2204	1977	2035	1835	2044	2109	2210	2313	2450	1896	1847	25279	75
Pakistani	266	251	256	231	223	284	264	283	291	282	259	223	3113	9
Not stated	191	209	154	168	154	204	206	201	235	186	151	176	2235	7
Bangladeshi	133	140	137	136	129	166	149	163	166	177	111	128	1735	5
Any other ethnic group	27	19	22	23	33	27	24	50	28	35	27	33	348	1
Mixed	25	35	26	27	28	31	29	28	29	34	17	26	335	1
Black	22	13	28	21	15	20	25	21	31	26	20	27	269	1
Any other Asian background	11	9	7	14	6	17	8	9	13	12	7	12	125	0
Indian	11	<10	12	9	6	<15	13	11	13	<15	6	<10	120	0
Chinese	***	***	***	***	***	0	<10	***	***	0	0	***	25	0
Not recorded	***	0	<6	***	***	***	***	0	***	***	0	0	16	0
<b>Total</b>	<b>3047</b>	<b>2889</b>	<b>2628</b>	<b>2670</b>	<b>2434</b>	<b>2806</b>	<b>2836</b>	<b>2977</b>	<b>3121</b>	<b>3214</b>	<b>2494</b>	<b>2484</b>	<b>33600</b>	<b>100</b>

**Table 4: Royal Oldham Hospital ED: Total injury attendances by method of disposal and month, October 2012 to September 2013<sup>4</sup>**

Disposal	Oct	Nov	Dec	Jan	Feb	Mar	Apr	May	Jun	Jul	Aug	Sep	Total	%
Discharged	1752	1756	1490	1515	1490	1742	1751	1868	1924	1944	1598	1640	20470	61
Referral/follow-up	888	731	708	768	590	675	740	697	797	886	490	490	8460	25
Admitted	354	331	342	342	317	342	309	355	347	321	339	303	4002	12
Other	53	71	88	45	37	47	36	57	53	63	67	51	668	2
<b>Total</b>	<b>3047</b>	<b>2889</b>	<b>2628</b>	<b>2670</b>	<b>2434</b>	<b>2806</b>	<b>2836</b>	<b>2977</b>	<b>3121</b>	<b>3214</b>	<b>2494</b>	<b>2484</b>	<b>33600</b>	<b>100</b>

<sup>2</sup> Please note that all numbers less than five have been suppressed in line with patient confidentiality and if there is only one number <5 in a category then two numbers will be suppressed at the next level.

<sup>3</sup> White = Irish, British, other white background; Mixed = white and black, white and Asian, mixed any other; Black = African, Caribbean, other black.

<sup>4</sup> Admitted=admitted to ED bed/became a lodged patient of the same health care provider; Discharged=discharged - did not require any follow up treatment; Referral/follow-up =discharged - follow up treatment to be provided by GP, referred to ED clinic, referred to fracture clinic, referred to other out-patient clinic, transferred to other health care provider, referred to other health care professional; Other=died in department, left department before being treated, left department having refused treatment, other.

**Table 5: Royal Oldham Hospital ED: Total injury attendances by method of disposal and injury group, October 2012 to September 2013<sup>5</sup>**

Disposal	Assault		Bites and stings		Burns and scalds		DSH		Fall		Other injury		RTC		Total	
	n	%	n	%	n	%	n	%	n	%	n	%	n	%	n	%
Discharged	795	49	376	72	247	36	195	49	3965	50	12847	65	2045	81	20470	61
Referral/follow-up	297	18	131	25	353	51	50	12	1684	21	5650	28	295	12	8460	25
Admitted	299	19	<15	2	<70	10	86	21	2105	26	1293	7	138	5	4002	12
Other	216	13	***	1	<30	4	70	17	249	3	46	0	57	2	668	2
<b>Total</b>	<b>1607</b>	<b>100</b>	<b>524</b>	<b>100</b>	<b>694</b>	<b>100</b>	<b>401</b>	<b>100</b>	<b>8003</b>	<b>100</b>	<b>19836</b>	<b>100</b>	<b>2535</b>	<b>100</b>	<b>33600</b>	<b>100</b>

**Table 6: Royal Oldham Hospital ED: Total injury attendances by mode of arrival and month, October 2012 to September 2013**

Arrival mode	Oct	Nov	Dec	Jan	Feb	Mar	Apr	May	Jun	Jul	Aug	Sep	Total	%
Private transport	1999	1872	1640	1690	1546	1851	1928	1972	2067	2179	1589	1633	21966	65
Ambulance	635	685	690	609	546	579	548	584	628	594	582	533	7213	21
Taxi	143	134	125	150	142	150	138	169	153	177	116	120	1717	5
Other	91	63	55	64	68	55	78	63	68	82	75	64	826	2
Public transport	74	38	38	61	57	91	69	77	97	55	47	44	748	2
Foot	50	53	48	54	47	47	47	72	65	81	48	55	667	2
Work transport	33	19	14	27	14	19	16	25	27	26	25	23	268	1
Police	22	25	18	15	14	14	12	15	16	20	12	12	195	1
<b>Total</b>	<b>3047</b>	<b>2889</b>	<b>2628</b>	<b>2670</b>	<b>2434</b>	<b>2806</b>	<b>2836</b>	<b>2977</b>	<b>3121</b>	<b>3214</b>	<b>2494</b>	<b>2484</b>	<b>33600</b>	<b>100</b>

**Table 7: Royal Oldham Hospital ED: Total injury and assault attendances by gender, incident location, and age group, October 2012 to September 2013**

	Assault attendees (n=1,607)		All injuries (n=33,600)
	n	%	%
<b>Gender</b>			
Female	420	26	46
Male	1187	74	54
<b>Mode of arrival</b>			
Ambulance	723	45	21
Other	884	55	79
<b>Age group</b>			
0 - 4	8	0	10
5 - 19	343	21	25
20 - 34	737	46	23
35 - 49	371	23	16
50 - 64	116	7	11
65 plus	32	2	15

Published November 2013  
 Jennifer Brizell (TIIG researcher)  
 Centre for Public Health, Faculty of Education, Health and Community, Liverpool John Moores University  
 2<sup>nd</sup> Floor, Henry Cotton Campus, 15-21 Webster Street, Liverpool, L3 2ET  
 Tel: 0151 231 4500 Email: [j.s.brizell@ljmu.ac.uk](mailto:j.s.brizell@ljmu.ac.uk)  
 Website: [www.tiig.info](http://www.tiig.info) (please note all data requests should be made through the TIIG website)  
 Twitter: @TIIG\_CPH

<sup>5</sup> Please note that all numbers less than five have been suppressed in line with patient confidentiality and if there is only one number <5 in a category then two numbers will be suppressed at the next level.